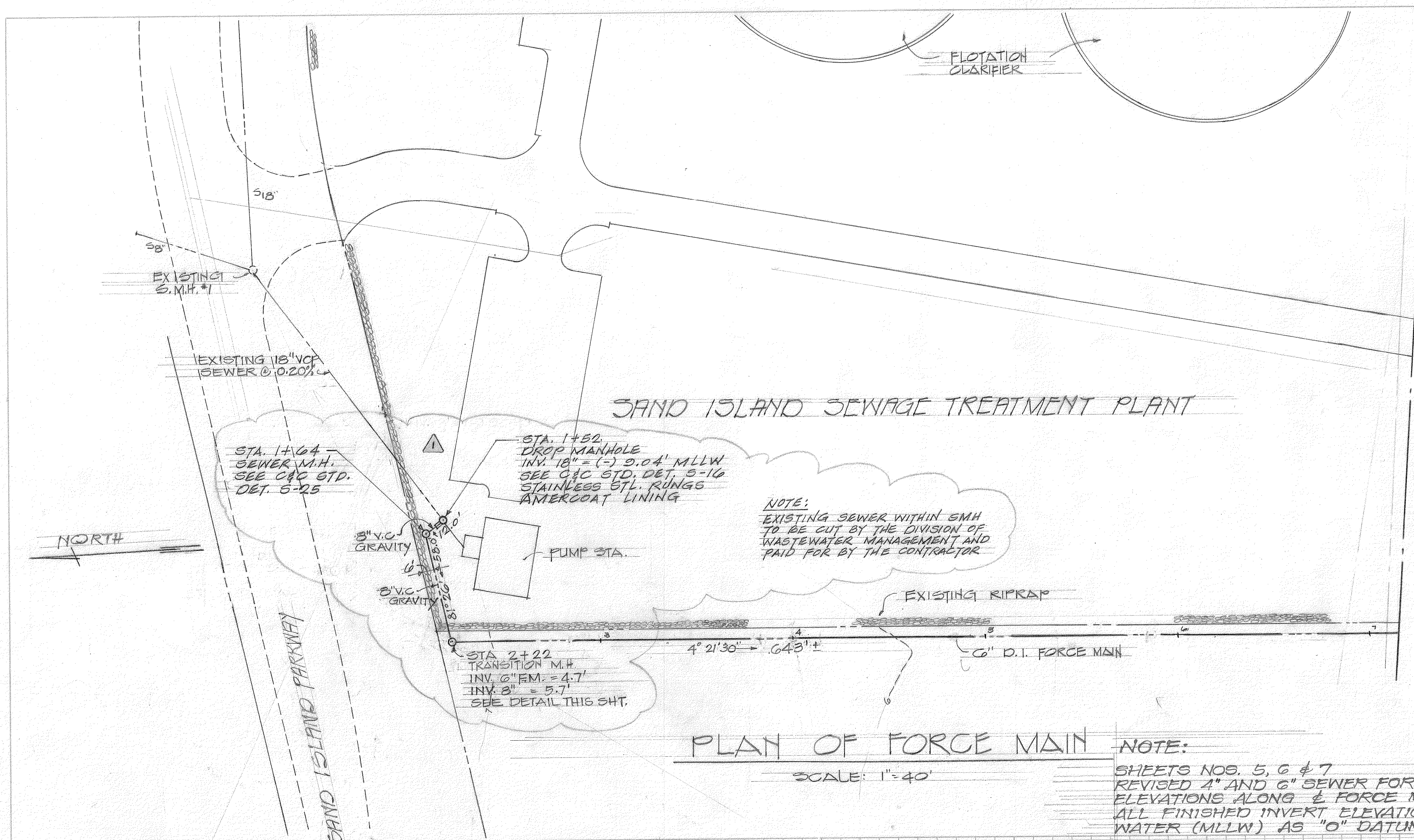


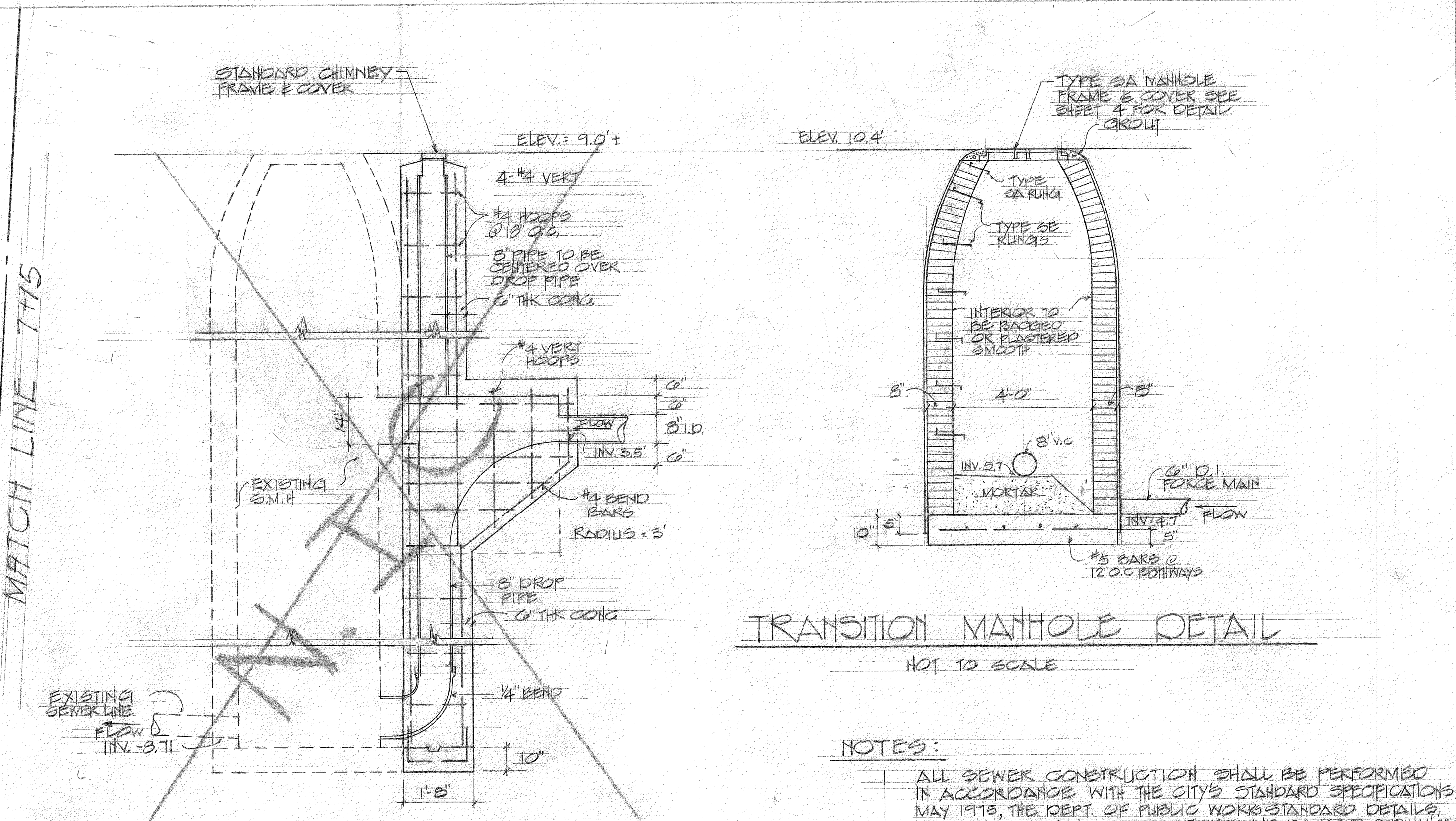
PLAN	SURVEYED	DATE
	ALIGNED	
	CHECKED	
	BY	
	NO. 1	



PLAN OF FORCE MAIN

SCALE: 1" = 40'

NOTE:
SHEETS NOS. 5, 6 & 7
REVISED 1" AND 6" SEWER FORCE MAIN INVERTS AND EXISTING GROUND
ELEVATIONS ALONG & FORCE MAIN FROM STA. 1+52 TO STA. 24+43.
ALL FINISHED INVERT ELEVATIONS ARE BASED ON MEAN LOWER LOW
WATER (MLLW) AS "0" DATUM.



STANDARD CHIMNEY CONNECTION TO EXISTING SEWER MANHOLE #1

NOT TO SCALE

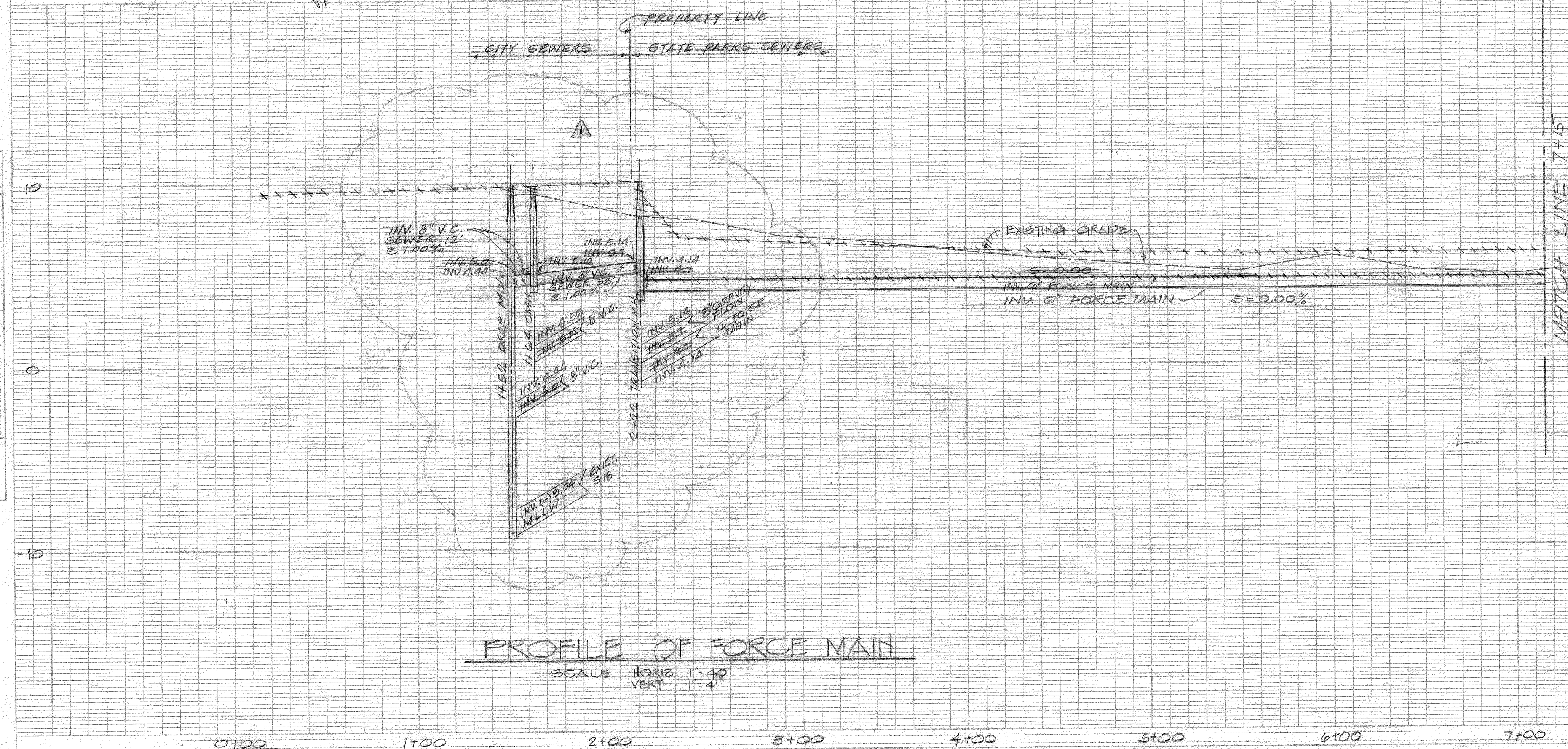
TRANSITION MANHOLE DETAIL

NOT TO SCALE

NOTES:
1 ALL SEWER CONSTRUCTION SHALL BE PERFORMED IN ACCORDANCE WITH THE CITY'S STANDARD SPECIFICATIONS, MAY 1978, THE DEPT. OF PUBLIC WORKS STANDARD DETAILS, AUG 1976, CURRENT CITY PRACTICES AND REVISED ORDINANCES OF HONOLULU, 1978.
2 THE CONTRACTOR SHALL NOTIFY THE DIVISION OF WASTEWATER MANAGEMENT SEVEN (7) DAYS PRIOR TO THE COMMENCEMENT OF WORK AND SUBMIT 4 SETS OF APPROVED CONSTRUCTION PLANS.

SYM.	DESCRIPTION	DATE	APP'D
	REVISED EXIST. GROUND PROFILE ALONG & FORCE MAIN & ADJUSTED INVERTS OF SMH & FORCE MAIN	5-12-85	J.P.
△	REVISED GRAVITY SEWER LINE	3-10-84	J.P.

PROFILE	SURVEYED	DATE
	PLOTTED	
	GRADES CHECKED	
	BY	
	NO. 1	

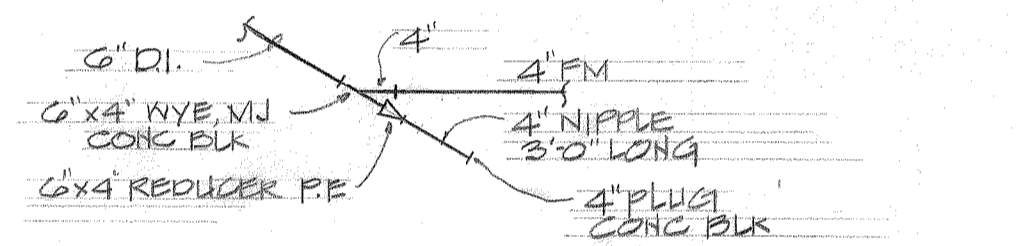
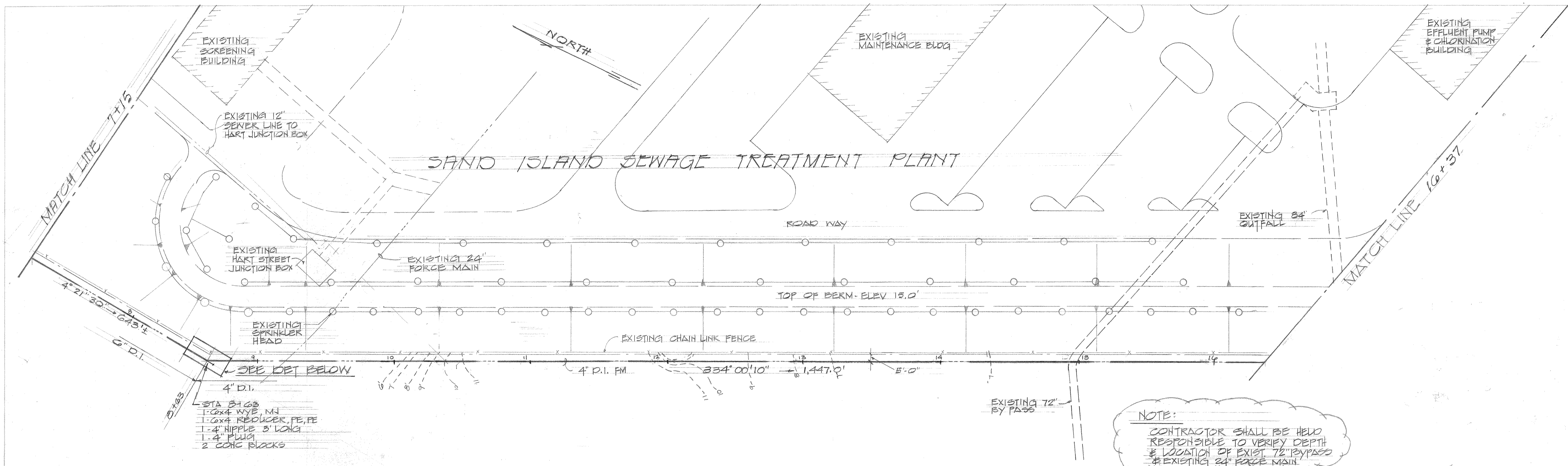


PROFILE OF FORCE MAIN

SCALE HORIZ 1" = 40'
VERT 1" = 4'

APPROVED: *Gary M. Uyama*
CHIEF, DIVISION OF WASTEWATER MANAGEMENT

DATE	
BY	
PLANNED	
CHECKED	
NOTED	
NO.	

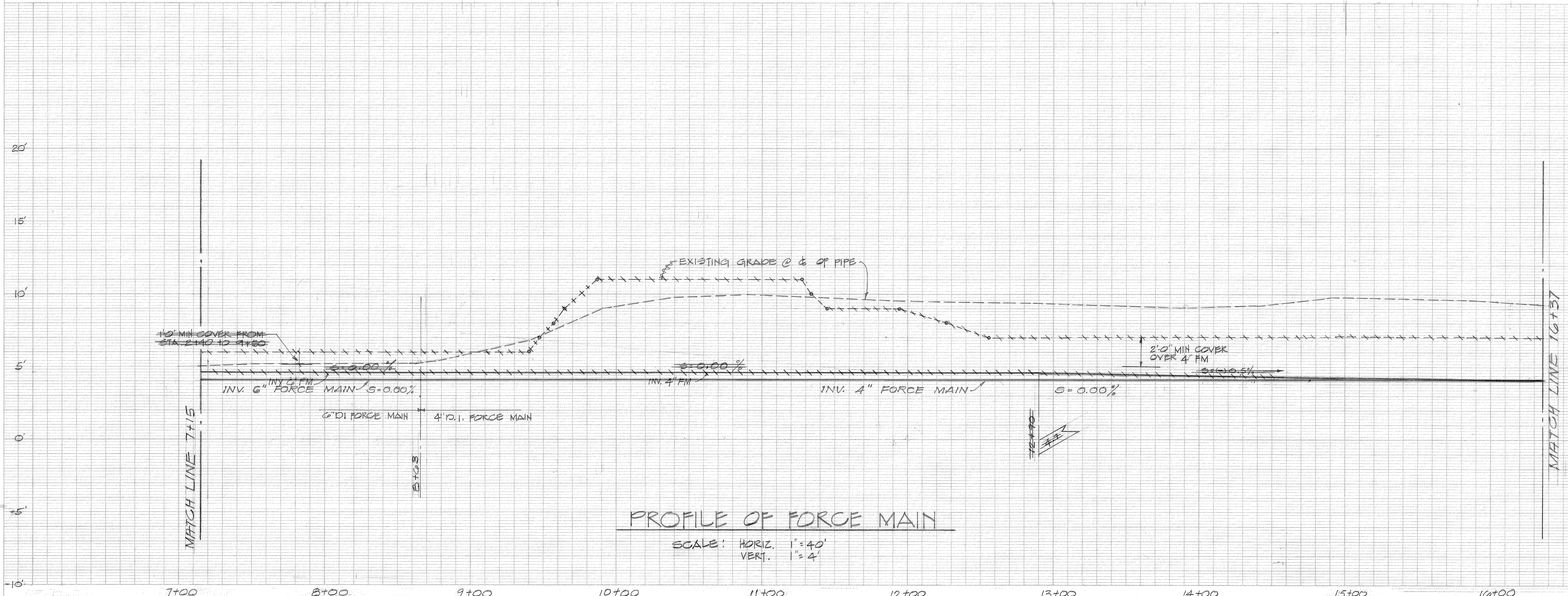


CONNECTION DETAIL @ STATION 8+63
NOT TO SCALE

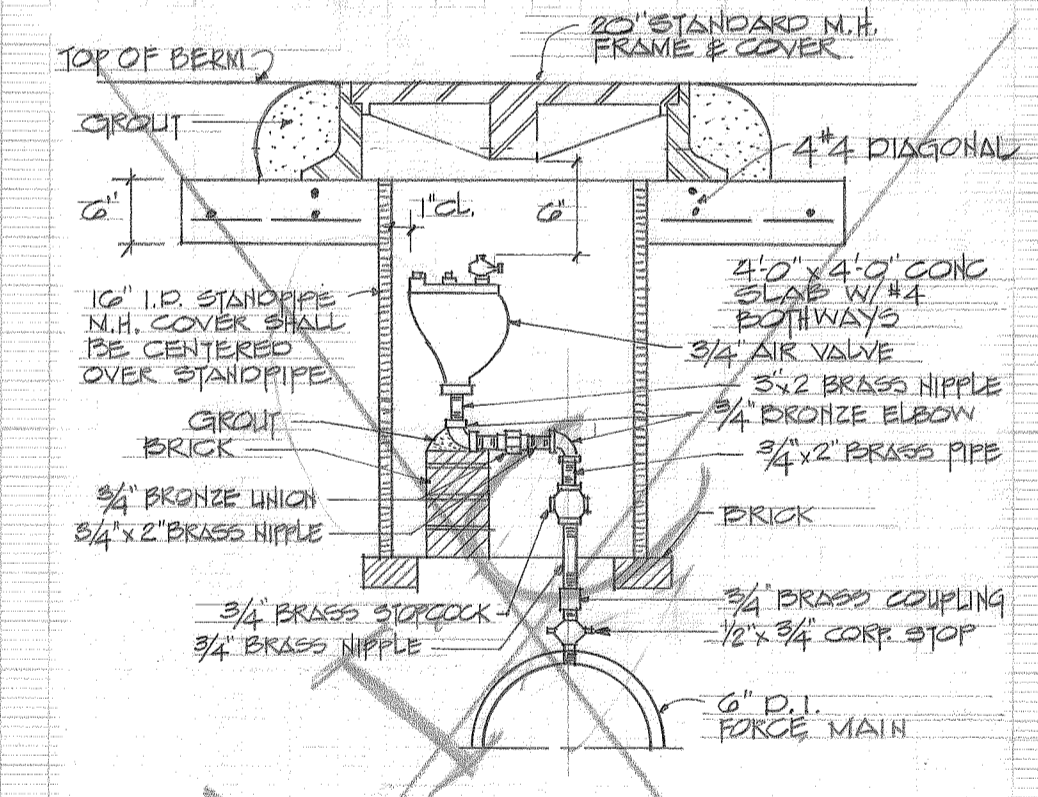
PLAN OF FORCE MAIN
SCALE 1" = 40'

NOTE:
SHEETS NOS. 5, 6, & 7
REVISED 4" AND 6" SEWER FORCE MAIN INVERTS AND EXISTING GROUND ELEVATIONS ALONG & FORCE MAIN FROM STA. 1+52 TO STA. 24+13. ALL FINISHED INVERT ELEVATIONS ARE BASED ON MEAN LOWER LOW WATER (MLLW) AS "0" DATUM.

DATE	
BY	
PLANNED	
CHECKED	
NOTED	
NO.	



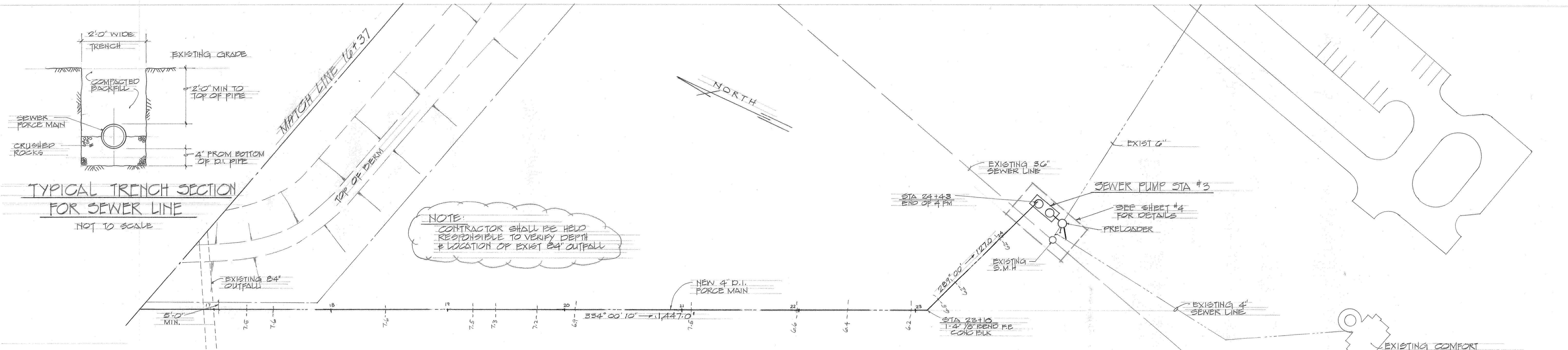
PROFILE OF FORCE MAIN
SCALE: HORIZ. 1" = 40'
VERT. 1" = 4'



STANDARD CONNECTION FOR 3/4" AIR RELIEF VALVE AT VALVE BOX
NOT TO SCALE

DATE	
BY	
PLAN	
SURVEYED	
PLOTTED	
CHECKED	
NOTE BOOK NO.	
RT. OF WAY CHECKED	

DATE	
BY	
PROFILE	
SURVEYED	
PLOTTED	
CHECKED	
NOTE BOOK NO.	
STRUCTURE NOTATIONS CHFD	



1. CONSTRUCTION OF SEWER SYSTEM SHALL BE IN ACCORDANCE WITH CITY AND COUNTY OF HONOLULU, DEPT. OF PUBLIC WORKS, "DESIGN STANDARDS OF THE DIVISION OF WASTEWATER MANAGEMENT", UNLESS OTHERWISE SHOWN ON PLANS.
2. ELEVATIONS ARE BASED ON MEAN LOW LOW WATER (M.L.L.W.) AS "0" DATUM.
3. SEWER MANHOLE TOPS SHALL BE FLUSH WITH THE FINISH PAVEMENT GRADE OR 0.10 FT ABOVE EXISTING GRADE.
4. CONTRACTOR SHALL NOTIFY THE DIVISION OF WASTEWATER MANAGEMENT IN WRITING SEVEN (7) DAYS PRIOR TO COMMENCING WORK ON CONNECTION TO EXISTING SMH #1.

PLAN OF FORCE MAIN

SCALE: 1" = 40'

NOTE:
SHEETS NOS. 5, 6, & 7
REVISED 4" AND 6" SEWER FORCE MAIN INVERTS AND EXISTING GROUND ELEVATIONS ALONG 4" FORCE MAIN FROM STA. 1+52 TO STA. 24+43. ALL FINISHED INVERT ELEVATIONS ARE BASED ON MEAN LOWER LOW WATER (M.L.L.W.) AS "0" DATUM.

